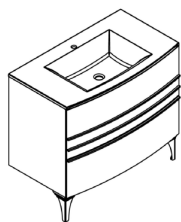
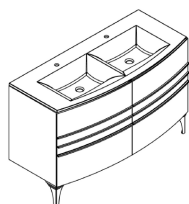


28" HIGH UNITS:

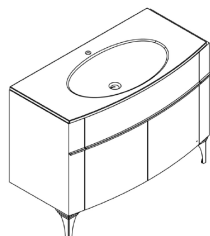


*Shown with Ceramyl® basin

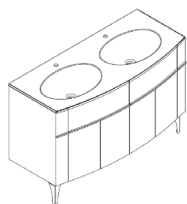
181300 (Ceramyl®)	Basin unit W75 - 3 drawers Supplied with: 2 sliding compartments in beech (small x2), 3 separators and 1 set of white melamine boxes	29½" x 21⅝" x 27⅞"	48kgs
181302.1 (Ceramyl®)	Basin unit W100 - 3 drawers Supplied with: 2 sliding compartments in beech (small x1 large x1), 3 separators and 1 set of 3 white melamine boxes	39⅜" x 22⅝" x 27⅞"	67kgs
181302.2 (Ceramic)			
181304.1 (Ceramyl®)	Basin unit W120 - 3 drawers Supplied with: 2 sliding compartments in beech (small x1 large x1), 4 separators and 1 set of 3 white melamine boxes	47¼" x 24⅓⅙" x 27⅞"	88kgs
181304.2 (Ceramic)			
181306.1 (Ceramyl®)	Double basin unit W140 - 6 drawers Supplied with: 2 sliding compartments in beech (small x2), 4 separators and 2 sets of 3 white melamine boxes	55½" x 24⅓⅙" x 27⅞"	106kgs
181306.2 (Ceramic)			



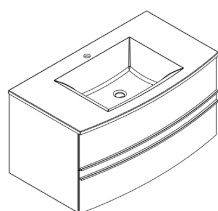
181303.1 (Ceramyl®)	Basin unit W100 1 drawer, 2 doors, 2 bottle drawers Supplied with: 2 sliding compartments in beech (small x1 large x1), 3 separators and 1 set of 3 white melamine boxes	39⅜" x 22⅝" x 27⅞"	67kgs
181303.2 (Ceramic)			
181305.1 (Ceramyl®)	Basin unit W120 1 drawer, 2 doors, 2 bottle drawers Supplied with: 2 sliding compartments in beech (small x1 large x1), 4 separators and 1 set of 3 white melamine boxes	47¼" x 24⅓⅙" x 27⅞"	88kgs
181305.2 (Ceramic)			
181307.1 (Ceramyl®)	Double basin unit W140 2 drawers, 4 doors, 2 side drawers Supplied with: 2 sliding compartments in beech (small x2), 4 separators and 2 sets of 3 white melamine boxes	55½" x 24⅓⅙" x 27⅞"	106kgs
181307.2 (Ceramic)			



*Shown with Ceramic basin

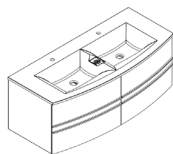


20" HIGH UNITS:

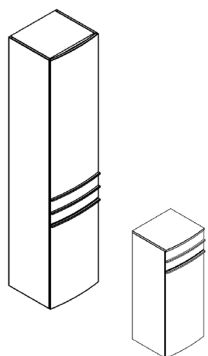


*Shown with Ceramyl® basin

181350 (Ceramyl®)	Basin unit W75 - 2 drawers Supplied with: 2 sliding compartments in beech, 3 movable separators and 1 set of white melamine boxes	29½" x 21⅝" x 20⅔"	40kgs
181351.1 (Ceramyl®)	Basin unit W100 - 2 drawers Supplied with: 2 sliding compartments in beech, 3 movable separators and 1 set of 3 white melamine boxes	39⅜" x 22⅝" x 20⅔"	56kgs
181351.2 (Ceramic)			
181352.1 (Ceramyl®)	Basin unit W120 - 2 drawers Supplied with: 2 sliding compartments in beech, 3 movable separators and 1 set of 3 white melamine boxes	47¼" x 24⅓⅙" x 20⅔"	73kgs
181352.2 (Ceramic)			
181353.1 (Ceramyl®)	Double basin unit W140 - 4 drawers Supplied with: 2 sliding compartments in beech, 3 movable separators and 1 set of 3 white melamine boxes	55½" x 24⅓⅙" x 20⅔"	91kgs
181353.2 (Ceramic)			

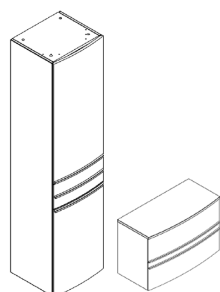


STORAGE TOWERS FOR 28" UNITS:

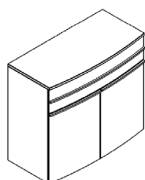


181310.RH (right hinges)	Tower unit - 1 door, 1 linen basket, 3 height-adjustable glass shelves	15 ³ / ₄ " x 15" x 70 ⁷ / ₈ "	42kgs
181310.LH (left hinges)			
181311.RH (right hinges)	Tower unit - 2 doors, 1 drawer, 3 glass + 2 laminate height-adjustable shelves	15 ³ / ₄ " x 15" x 70 ⁷ / ₈ "	45kgs
181311.LH (left hinges)			
181312.RH (right hinges)	Half tower unit - 1 door, 1 drawer, 2 laminate height-adjustable shelves	15 ³ / ₄ " x 15" x 38 ⁹ / ₁₆ "	30kgs
181312.LH (left hinges)			
181315.RH (right hinges)	Half tower unit	15 ³ / ₄ " x 15" x 38 ⁹ / ₁₆ "	30kgs
181315.LH (left hinges)	1 linen basket, 1 drawer		

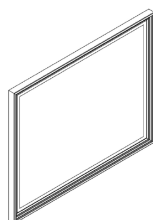
STORAGE TOWERS FOR 20" UNITS:



181356.RH (right hinges)	Tower unit - 1 door, 1 linen basket, 3 height-adjustable glass shelves	15 ³ / ₄ " x 15" x 63 ³ / ₄ "	41kgs
181356.LH (left hinges)			
181355.RH (right hinges)	Tower unit - 2 doors, 1 drawer, 5 height-adjustable glass shelves	15 ³ / ₄ " x 15" x 63 ³ / ₄ "	44kgs
181355.LH (left hinges)			
181354.RH (right hinges)	Lower storage unit	31 ¹ / ₂ " x 15" x 20 ¹ / ₁₆ "	39kgs
181354.LH (left hinges)	2 drawers		



181314	Wall-hung double storage unit 2 doors, 1 laminate height-adjustable shelf	31 ¹ / ₂ " x 10 ⁷ / ₁₆ " x 19 ¹⁵ / ₁₆ "	20kgs
181313	Double storage unit 2 doors, 1 drawer, 1 laminate height-adjustable shelf	31 ¹ / ₂ " x 15" x 27 ⁹ / ₁₆ "	40kgs



181320	Mirror W75 - LED lighting 95 lumen / W-4500°K, Anti-fog system 30W, LED power 24W, Class II - IP 44 - CE, Energy class: A++/A+/A	29 ¹ / ₂ " x 1 ¹ / ₂ " x 31 ³ / ₈ "	10kgs
181321	Mirror W100 - LED lighting 95 lumen / W-4500°K, Anti-fog system 30W, LED power 28.80W, Class II - IP 44 - CE, Energy class: A++/A+/A	39 ³ / ₈ " x 1 ¹ / ₂ " x 31 ³ / ₈ "	13kgs
181322	Mirror W120 - LED lighting 95 lumen / W-4500°K, Anti-fog system 60W, LED power 32.64W, Class II - IP 44 - CE, Energy class: A++/A+/A	47 ¹ / ₄ " x 1 ¹ / ₂ " x 31 ³ / ₈ "	15kgs
181323	Mirror W140 - LED lighting 95 lumen / W-4500°K, 2 Anti-fog systems 30W each, LED power 36.72W, Class II - IP 44 - CE, Energy class: A++/A+/A	55 ¹ / ₈ " x 1 ¹ / ₂ " x 31 ³ / ₈ "	18kgs



181319	1 set of 2 height adjustable feet in Zamac chrome finish	4 ⁵ / ₈ " x 4 ⁵ / ₈ " x 7 ⁷ / ₈ "	1.6kgs
---------------	--	---	--------